

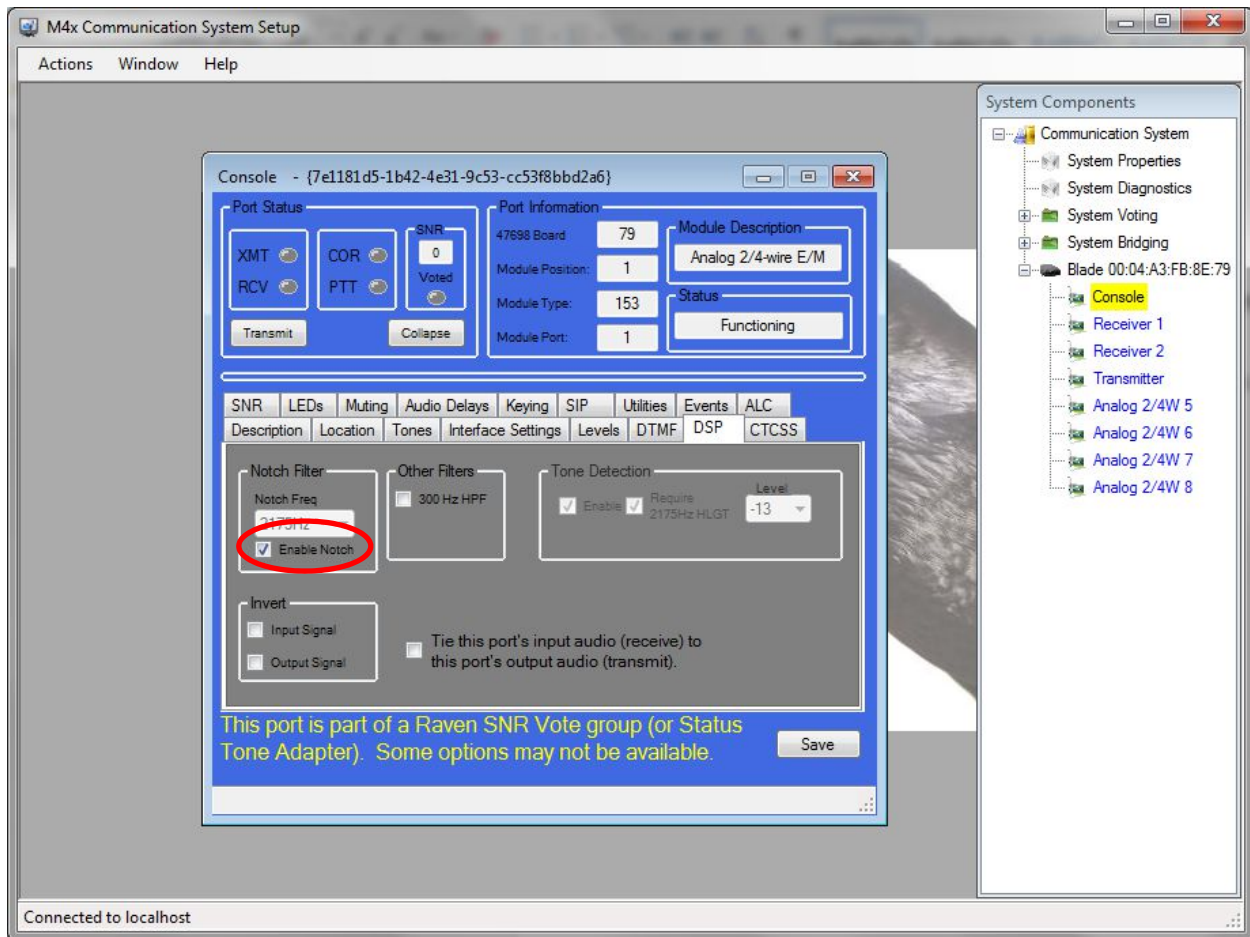


TN131 Notch Filter Disables when Connecting to Software

Notch Filter Disables when Connecting to Software

Overview: After configuring a voter with the notch filter enabled on a port, the notch filter stops working when the unit is connected to the M4x software again.

Solution: After connecting to the software again, go to the “DSP” tab of the port(s) on which the notch filter is disabled. Even though the “Enable Notch” box is checked, you will need to uncheck and then recheck the box again for the filter to function. When done, click the “Save” button in the lower right. See screen shot below.



Note: Be sure to perform this process any time you make changes to the voter configuration and before you save those changes to Flash.